

# L'Industria incontra Giovani Ingegneri: Opportunità di Lavoro Internazionali per Giovani Ingegneri e Aziende

Entities Involved in  
Current edition:



**Gli interessati a Colloqui Preliminari con le Aziende sono invitati a mandare il Curriculum Vitae a:**  
[mipet@simulationteam.com](mailto:mipet@simulationteam.com)

**INVITO A TUTTI  
GLI STUDENTI  
DI INGEGNERIA,  
INFORMATICA &  
COMPUTER SCIENCE**



[www.itim.unige.it/mipet](http://www.itim.unige.it/mipet)

[www.itim.unige.it/mipet/join](http://www.itim.unige.it/mipet/join)

**Meeting Program**  
**27 marzo, 2014, 9:30 am - 18:00**  
**Aula Magna, B1**  
**via Opera Pia 15a, 16145 Genova, Italy**

[www.itim.unige.it/cs/plants/job](http://www.itim.unige.it/cs/plants/job)

**27 marzo**  
**Aula Magna B1**

<b>09:30</b>	<b>Benvenuto Prof. Agostino G. Bruzzone</b>
<b>10:00</b>	<b>Opportunita' Internazionali</b>
<b>10:30</b>	<b>Responsabili di Aziende e Centri Leader a livello Mondiale evidenziano le Sfide e le Opportunità per Aziende e Giovani</b>
<b>11:15</b>	<b>Incontro diretto con le Aziende e Colloqui Preliminari</b>
<b>13:00</b>	<b>Prosecuzione dei colloqui e campus interview</b>
<b>18:00</b>	<b>Prosecuzione dei colloqui e campus interview</b>



Accesso gratuito e libero, per ulteriori informazioni,  
 prega contattare [mipet@simulationteam.com](mailto:mipet@simulationteam.com)  
[www.itim.unige.it/cs/plants/job](http://www.itim.unige.it/cs/plants/job)

Industry meets Young Engineers:

# International Work Opportunities for Young Engineers & Companies

Entities Involved in Current edition:

**People interested in Campus Interviews are invited to send Curriculum Vitae to: [mipet@simulationteam.com](mailto:mipet@simulationteam.com)**

**ALL ENGINEERING & COMPUTER SCIENCE STUDENTS ARE INVITED**

[www.itim.unige.it/mipet/join](http://www.itim.unige.it/mipet/join)

**Meeting Program** [www.itim.unige.it/cs/plants/job](http://www.itim.unige.it/cs/plants/job)

**March 27, 2014, 9:30 am - 18:00**

**Aula Magna, B1**

**via Opera Pia 15a Genova, Italy**

**March 27**

**Aula Magna B1**

**09:30 Welcome Prof. Agostino G. Bruzzone**

**10:00 International Opportunities**

**10:30 Managers from International Major Companies & Centers on Student/Company Opportunities & Challenges**

**11:15 Meeting with Companies & Campus Interviewing**

**13:00 Campus Interview**

**18:00 Closure**

[www.itim.unige.it/mipet](http://www.itim.unige.it/mipet)

# L'Industria incontra Giovani Ingegneri: Opportunità di Lavoro Internazionali per Giovani Ingegneri e Aziende

Entities Involved in  
Current edition:



***Gli interessati a Colloqui Preliminari con le Aziende sono invitati a mandare il Curriculum Vitae a: [mipet@simulationteam.com](mailto:mipet@simulationteam.com)***



## INVITO A TUTTI GLI STUDENTI DI INGEGNERIA, INFORMATICA, SCIENZE E COMPUTER SCIENCE

[www.itim.unige.it/mipet/join](http://www.itim.unige.it/mipet/join)

### Meeting Program

27 marzo, 2014, 9:30 am - 18:00

Aula Magna, B1

via Opera Pia 15a, 16145 Genova, Italy

[www.itim.unige.it/cs/plants/job](http://www.itim.unige.it/cs/plants/job)

**27 marzo**

**Aula Magna B1**

- 09:30 Benvenuto Prof. Agostino G. Bruzzone
- 10:00 Opportunità Internazionali
- 10:30 Responsabili di Aziende e Centri Leader a livello Mondiale evidenziano le Sfide e le Opportunità per Aziende e Giovani
- 11:15 Incontro diretto con le Aziende e Colloqui Preliminari
- 13:00 Prosecuzione dei colloqui e campus interview
- 18:00 Chiusura



Accesso gratuito e libero, per ulteriori informazioni,  
prego contattare [mipet@simulationteam.com](mailto:mipet@simulationteam.com)  
[www.itim.unige.it/cs/plants/job](http://www.itim.unige.it/cs/plants/job)



Industry meets Young Engineers:

# International Work Opportunities for Young Engineers & Companies

Entities Involved in Current edition:



**People interested in Campus Interviews are invited to send their Curriculum Vitae to: [mipet@simulationteam.com](mailto:mipet@simulationteam.com)**



**ALL ENGINEERING, SCIENCE AND COMPUTER SCIENCE STUDENTS ARE INVITED**

**[www.itim.unige.it/mipet/join](http://www.itim.unige.it/mipet/join)**

**Meeting Program**

**March 27, 2014, 9:30 am - 18:00  
Aula Magna, B1  
via Opera Pia 15a Genova, Italy**

[www.itim.unige.it/cs/plants/job](http://www.itim.unige.it/cs/plants/job)

**March 27  
Aula Magna B1**

- 09:30 Welcome Prof. Agostino G. Bruzzone**
- 10:00 International Opportunities**
- 10:30 Managers from International Major Companies and Centers on Student/Company Opportunities & Challenges**
- 11:15 Meeting with Companies & Campus Interviewing**
- 13:00 Further Campus Interview**
- 18:00 Closure**



**Free Access, for additional information, please contact: [mipet@simulationteam.com](mailto:mipet@simulationteam.com)  
[www.itim.unige.it/cs/plants/job](http://www.itim.unige.it/cs/plants/job)**



Industry meets Young Engineers:

# International Work Opportunities for Young Engineers & Companies

Entities Involved in Current edition:



*Prof. Agostino G. Bruzzone  
President MIPET & Simulation Team*

# Welcome



Free Access, for additional information,  
please contact: [mipet@simulationteam.com](mailto:mipet@simulationteam.com)  
[www.itim.unige.it/cs/plants/job](http://www.itim.unige.it/cs/plants/job)

# Genoa University, Polytechnic School & Engineering Faculty

The University of Genoa is one of the oldest in Italy and in the World (founded in 1471 AD), it is located in middle of Italian Riviera.

The students are about 40,000 (about 8,000 new entries), and the Engineering Departments involve around 7,500 students distributed among Genoa Locations and two External Sites: Savona Campus and La Spezia Area

Recently the Polytechnic School was established combining Engineering Faculty and Architecture in order to reinforce the vocation of Genoa University to be an International Leader in Innovative Technologies in a wide spectrum of applications

For further Information about the Engineering & University of Genoa:



[www.itim.unige.it](http://www.itim.unige.it)

[www.ingegneria.unige.it](http://www.ingegneria.unige.it)

[www.unige.it](http://www.unige.it)

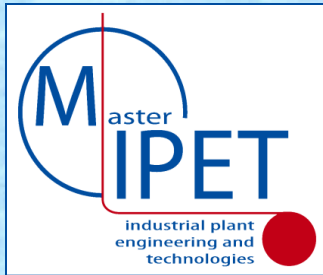


*Prof. Aristide Fausto Massardo, Dean*





# CONFINDUSTRIA Genova



**CONFINDUSTRIA  
Genova  
supports actively  
the MIPET since  
and promote  
these initiatives  
among Industrial  
Community**





# Intellectual Capital for Future of Engineering

*Jack Welch (GE CEO 1981-2001 from \$14 billions market value to over \$410 billions):* Globalization has changed us into a company that searches the world, not just to sell or to source, but to find Intellectual Capital: the World's Best Talents and Greatest Ideas



**Scientists investigate that which already is; Engineers create that which has never been**  
*Albert Einstein, Physics Nobel Price 1921*



# They Came from Outer World

Top Companies are used to accept CEO from Foreign Countries based on their capabilities, with an evident Globalization



PepsiCo, USA  
Revenues 65.5 bUSD  
Profits 6.2 bUSD  
Indra Nooyi, India



Coca-Cola, USA  
Revenues 48.1 bUSD  
Profits 9.0 bUSD  
Muhtar Kent, Turkey



Nissan, Japan  
Revenues 22.7 bUSD  
Profits 1.1 bUSD  
Carlos Ghosn, Brazil



Dior, France  
Revenues 40.9 bUSD  
Profits 1.9 bUSD  
Sidney Toledano, Marocco



Deutsche Bank, Germany  
Revenues 68.5 bUSD  
Profits 0.3 bUSD  
Anshu Jain, India



Tata Motors, India  
Revenues 34.5 bUSD  
Profits 1.8 bUSD  
Karl Slim, UK





# A Two-Speed World

The crisis pointed out by Media is very relative in term of Geographic/Temporal Coordinates for Instance:

- **Automotive Vehicles: +19% Worldwide from 2008 to 2012**
- **Shipbuilding:**  
 Europe from 8% of World Market to 3% (-60%)  
 2011: 200 Ship in Construction just in Shanghai Area

## GDP:

<b>2012:</b>	<b>China 9.5%</b>	<b>Italy 1.3%</b>	<b>Germany 2.0%</b>
	<b>USA 2.8%</b>	<b>Qatar 7.1%</b>	<b>Indonesia 6.5%</b>
	<b>Russia 4.5%</b>	<b>Angola 10.4%</b>	<b>Nigeria 6.5%</b>
	<b>India 7.8%</b>	<b>Iraq 12.5%</b>	
	<b>Brazil 4.1%</b>	<b>Chile 4.9%</b>	
	<b>Vietnam 6.7%</b>	<b>Malaysia 5.2%</b>	
	<b>World 4.5%</b>	<b>Europe 1.7%</b>	



Commercial Vehicle Production 2008-2012			
Rk	Country	Δ Vehicles	[%]
1	USA	1,306,131	27%
2	China	1,186,715	46%
3	Canada	536,629	61%
4	Thailand	532,987	54%
5	India	373,421	77%
6	Mexico	241,481	25%
7	Indonesia	152,851	90%
8	Argentina	69,269	35%
9	Brazil	48,666	7%
10	Iran	30,550	28%
11	South Africa	22,710	9%

Car Production 2008-2012				
Rk	Country	Δ Cars	[%]	
13	1	China	8,785,913	130%
14	2	India	1,439,445	78%
15	3	South Korea	716,611	21%
16	4	Mexico	592,549	49%
17	5	Thailand	556,314	139%
18	6	Russia	499,360	34%
19	7	USA	329,212	9%
20	8	Slovakia	324,224	56%
21	9	Indonesia	312,078	72%
22	10	Czech Rep.	237,728	25%
23	11	Taiwan	139,329	100%
24	12	Argentina	98,140	25%
25	13	Romania	95,500	41%
26	14	Brazil	77,975	3%
27	15	Others	62,016	17%
28	16	Malaysia	25,888	5%
29	17	UK	18,287	1%
30	18	Serbia	409	4%
31	19	Austria	-1,836	-1%
32	20	Finland	-14,619	-83%
33	21	Portugal	-16,507	-12%
34	22	Netherlands	-31,223	-53%
35	23	Egypt	-35,605	-49%
36	24	Turkey	-44,907	-7%
37	25	South Africa	-46,251	-14%
38	26	Uzbekistan	-50,058	-26%
39	27	Slovenia	-53,397	-30%
40	28	Sweden	-89,473	-35%
29	Iran	-92,870	-10%	
30	Australia	-107,110	-38%	
31	Hungary	-126,919	-37%	
32	Germany	-143,574	-3%	
33	Canada	-155,138	-13%	
34	Belgium	-172,927	-25%	
35	Italy	-262,404	-40%	
36	Poland	-302,000	-36%	
37	Ukraine	-331,112	-83%	
38	Spain	-403,369	-21%	
39	France	-463,121	-22%	
40	Japan	-1,373,924	-14%	
	<b>Total</b>	<b>10,343,424</b>	<b>20%</b>	



# A Two-Speed World

The crisis pointed out by Media is very relative in term of Geographic/Temporal Coordinates for Instance:

- **Automotive Vehicles: +19% Worldwide from 2008 to 2012**
- **Shipbuilding:**  
 Europe from 8% of World Market to 3% (-60%)  
 2011: 200 Ship in Construction just in Shanghai Area

## GDP:

<b>2013:</b>	<b>China 7.8%</b>	<b>Italy -2.4%</b>	<b>Germany 0.7%</b>
	<b>USA 2.2%</b>	<b>Qatar 6.6%</b>	<b>Indonesia 6.2%</b>
	<b>Russia 3.4%</b>	<b>Angola 3.7%</b>	<b>Nigeria 6.3%</b>
	<b>India 6.6%</b>	<b>Iraq 17.5%</b>	
	<b>Brazil 0.9%</b>	<b>Chile 5.5%</b>	
	<b>Vietnam 14.0%</b>	<b>Malaysia 5.6%</b>	
	<b>World 3.9%</b>	<b>Europe -0.2%</b>	



Commercial Vehicle Production 2008-2012			
Rk	Country	Δ Vehicles	[%]
1	USA	1,306,131	27%
2	China	1,186,715	46%
3	Canada	536,629	61%
4	Thailand	532,987	54%
5	India	373,421	77%
6	Mexico	241,481	25%
7	Indonesia	152,851	90%
8	Argentina	69,269	35%
9	Brazil	48,666	7%
10	Iran	30,550	28%
11	South Africa	22,710	9%

Car Production 2008-2012				
Rk	Country	Δ Cars	[%]	
13	1	China	8,785,913	130%
14	2	India	1,439,445	78%
15	3	South Korea	716,611	21%
16	4	Mexico	592,549	49%
17	5	Thailand	556,314	139%
18	6	Russia	499,360	34%
19	7	USA	329,212	9%
20	8	Slovakia	324,224	56%
21	9	Indonesia	312,078	72%
22	10	Czech Rep.	237,728	25%
23	11	Taiwan	139,329	100%
24	12	Argentina	98,140	25%
25	13	Romania	95,500	41%
26	14	Brazil	77,975	3%
27	15	Others	62,016	17%
28	16	Malaysia	25,888	5%
29	17	UK	18,287	1%
30	18	Serbia	409	4%
31	19	Austria	-1,836	-1%
32	20	Finland	-14,619	-83%
33	21	Portugal	-16,507	-12%
34	22	Netherlands	-31,223	-53%
35	23	Egypt	-35,605	-49%
36	24	Turkey	-44,907	-7%
37	25	South Africa	-46,251	-14%
38	26	Uzbekistan	-50,058	-26%
39	27	Slovenia	-53,397	-30%
40	28	Sweden	-89,473	-35%
29	Iran	-92,870	-10%	
30	Australia	-107,110	-38%	
31	Hungary	-126,919	-37%	
32	Germany	-143,574	-3%	
33	Canada	-155,138	-13%	
34	Belgium	-172,927	-25%	
35	Italy	-262,404	-40%	
36	Poland	-302,000	-36%	
37	Ukraine	-331,112	-83%	
38	Spain	-403,369	-21%	
39	France	-463,121	-22%	
40	Japan	-1,373,924	-14%	
	<b>Total</b>	<b>10,343,424</b>	<b>20%</b>	



# Global 500 Companies in World during 2013

TOP COMPANIES Worldwide in term of World Sales Percentage 2013 vs. 2011

Main Companies worldwide have serious challenges in 2013 therefore some result are provided:

Royal Dutch Shell	Revenues -0.6%	Profits 26'592 -14%	1	World Ranking (Previously 1)
Wal-Mart	Revenues +5%	Profits 16'999 +8.3%	2	World Ranking (Previously 3)
Sinopec	Revenues +14%	Profits 8'2221 -13%	4	World Ranking (Previously 5)
China Nat.Petr.	Revenues +16%	Profits 18'196 +11%	5	World Ranking (Previously 6)
State Grid	Revenues +15%	Profits 12'138 +117%	7	World Ranking (Previously 7)
Volkswagen	Revenues +12%	Profits 27'909 +30%	9	World Ranking (Previously 12)
GazProm	Revenues +2.7%	Profits 38'086 -14%	21	World Ranking (Previously 15)
General Electric	Revenues -0.5%	Profits 13'641 -3.6%	24	World Ranking (Previously 22)





# Global 500 Companies in Italy: Challenges and Opportunities

Companies, even in Italy, have to face the challenges, therefore some results are interesting and there are opportunities everywhere and every time if decision making is effective and efficient:

<b>ENI</b>	Revenues	+9.3%	Profits	10.0 GUSD	+4.9%	17 World Company (previously 17)
<b>EXOR/FIAT</b>	Revenues	+21%	Profits	0.5 GUSD	-27%	26 World Company (previously 45)
<b>Generali</b>	Revenues	+1.0	Profits	0.1 GUSD	-90%	49 World Company (previously 48)
<b>ENEL</b>	Revenues	-1.3%	Profits	1.1 GUSD	-80%	52 World Company (previously 52)
<b>UNICREDIT</b>	Revenues	-8.6%	Profits	1.1 GUSD	change	188 World Company (previously 164)
<b>Intesa S.Paolo</b>	Revenues	-7.3%	Profits	2.6 GUSD	change	221 World Company (previously 193)
<b>Telecom</b>	Revenues	-9.0%	Profits	-2.0 GUSD	1/5	281 World Company (previously 244)
<b>Poste Italiane</b>	Revenues	+2.5%	Profits	1.3 GUSD	+13%	368 World Company (previously 361)
<b>Finmeccanica</b>	Revenues	0%	Profits	-1.1 GUSD	1/3	Out of ranking





# Human Capital is becoming Even more Important

Engineering is providing an unique opportunity to improve the Capabilities and Understanding of high qualified people: Scientists, Researchers, Technicians and Engineers

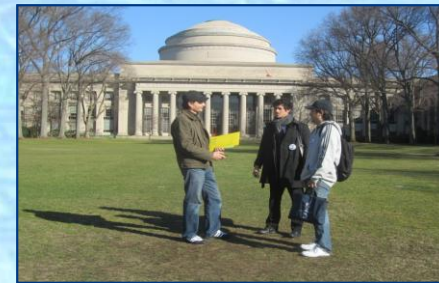






# Impiantistica e Ingegneria a Genova

In Genoa University several groups are active in Industrial Plant Engineering; for instance the Simulation Team MITIM DIME resulted as evolution of the Institute of Technology and Industrial Plant Engineering & Management (ITIM) that was focused on these issues since '60; DIST, DICHEP, DINAEL and other Engineering Departments are also active on these subjects. The Genoa University is involved in several R&D activities on Plant and Process Engineering and also in Undergraduate, Postgraduate and Continuous Education on this area. Simulation Team MITIM DIME for instance co-operates actively with major Excellence Centers World-Wide.





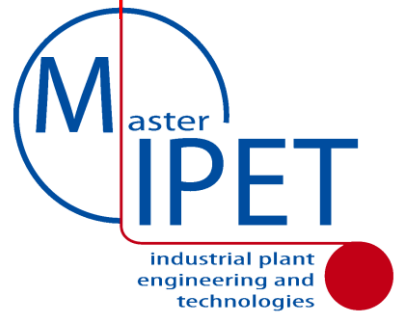


# Simulation Team MITIM DIME

The Simulation Team - MITIM DIME of *Genoa University* carries out many industrial projects in cooperation with the large corporations and Small and Medium sized Enterprises; some example of recent industrial simulation project are following:

	<b>ENI Group</b>	<b>Fleet Management Planning &amp; Scheduling Chemical Plant Logistics Optimization</b>			
	<b>Ansaldo</b>	<b>Plant Service Management and Optimization</b>			
	<b>LAMCE Petrobras</b>	<b>Oil Platform Simulation and Augmented Reality</b>			
	<b>EDA</b>	<b>Decision Support for Country Reconstruction Activity Planning</b>			
	<b>Cetena</b>	<b>Simulation for Life Cycle Assessment</b>			
	<b>Fincantieri</b>	<b>of New Vessels</b>			
		Members of MISS are appointed in several positions in simulation community such as:			
		● General Director M&S Net (34 M&S Centers Worldwide)			
		● President Simulation Team (20 Centers Worldwide)			
		● Associate Vice President of SCS and Chairman of Technical Chapter			
		● Member of NATO SAS, MSG, and NIAG			





# MIPET

5<sup>th</sup> Edition  
2014



Scuola Politecnica  
Università degli Studi di Genova



DIME



CONFINDUSTRIA  
GENOVA



Ordine Ingegneri Genova

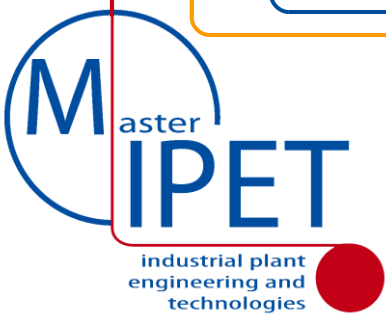


Mastering Industrial Plant Engineering and Technologies is an initiative promoted by a joint Team of Academic Institutions, Industries and Associations. MIPET includes an International Master focused on these Issues. The MIPET Excellence is based on the strong cooperation among Academic and Technical Experts coming from Prestigious Universities and Leading Companies operating in this area with special attention to Energy, Iron & Steel, EPC, Large Industrial Plants and Process Industries, Oil & Gas

Sponsors



[www.itim.unige.it/mipet](http://www.itim.unige.it/mipet)



# Academia, Institutions & Industries

## MIPET ORGANIZERS & SUPPORTING INSTITUTIONS



## SPONSOR COMPANIES



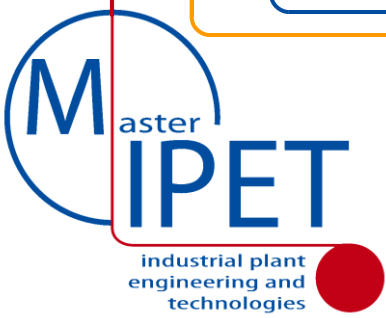
Prof. A.G. Bruzzone  
MIPET Director

[www.itim.unige.it/mipet](http://www.itim.unige.it/mipet)

Copyright © 2014  
Genoa University

[mipet@simulationteam.com](mailto:mipet@simulationteam.com)





# MIPET OUTCOME

This Master is devoted to create System and Process Engineers, Technical Coordinators operating effectively in Project Teams in Global Engineering and Construction. MIPET provides a deeper insight in Industrial Plants and enables the students to get a complete overview of a project with all its technical aspects along each project stage: Proposal, Basic and Detailed Engineering, Procurement, Manufacturing, Erection, Commissioning and Service. MIPET graduates acquire capabilities in all the critical areas (mechanical, materials, processes and components, electrical, instrumentation & automation, cost estimate, project management, risk & safety, quality assurance) combined with a specific training in specific industrial sectors (i.e. Power Equipment, Iron & Steel) as well as with Internship Experiences in Companies.



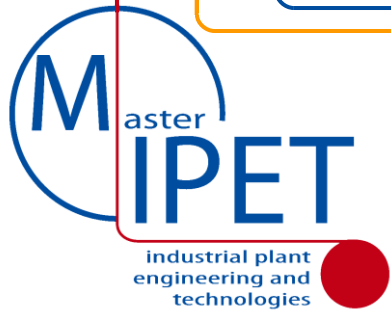
Prof. A.G. Bruzzone  
MIPET Director

[www.itim.unige.it/mipet](http://www.itim.unige.it/mipet)

Copyright © 2014  
Genoa University

[mipet@simulationteam.com](mailto:mipet@simulationteam.com)





# WHO SHOULD ATTEND

- Young Engineers with strong potential and technical background
- International Excellent Students of Engineering Departments from all around the world
- Engineers with experience in Plant Engineering from world-wide
- Engineers already employed in Engineering and Construction Companies who are interested in attending specific Operative Modules of the MIPET Master Program such as Project Management, Constructions, Standards and Regulations, Safety, Security & Risks



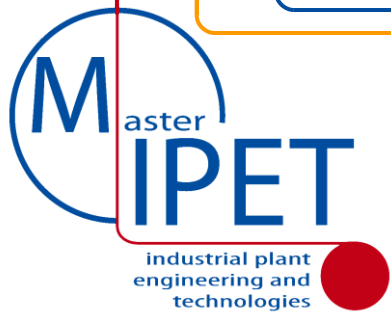
Prof. A.G. Bruzzone  
MIPET Director

[www.itim.unige.it/mipet](http://www.itim.unige.it/mipet)

Copyright © 2014  
Genoa University

[mipet@simulationteam.com](mailto:mipet@simulationteam.com)





# MIPET ADDED VALUE

## BENEFITS FOR YOUNG ENGINEERS

- High Profile Professional Education devoted to provide High Value Skills in Industrial Plant Engineering and Technologies
- Continuous Interaction with Top Quality Experts from Academia, Institutions and leading Engineering & Construction Companies.
- Very Qualified Selection and Evaluation Processes that guarantee the Master Attendees as highly qualified resources for top companies.
- Opportunities to complete experiences On Field on complex Industrial Plant projects and to work on an International Framework
- Contacts and visibility to major E&C\* Companies and EPC\*\* Contractors (EPC) operating at International and National level.
- Developing Human Potential of the attendees by training and improving their Individual and Team Working capabilities.



\* E&C Engineering & Contracting

\*\* EPC Engineering, Procurement & Construction



# INVESTEMENTS & SELECTION



- The Master is based on MIPET agreement among Genoa University the Sponsoring Companies and Genoa University. In fact MIPET Industrial Sponsors financed extensively the past editions (from 80% till 100%), confirming the strong interest in this initiative and its ROI\*
- To attend the Master, each applicant is requested to pass a selection process based on Interview (Live or by Phone/Skype) and Qualification (i.e. Curriculum Vitae).
- The MIPET Selection combines Technicians, Human Resource, Experts from Academia and Industry to identify best candidates (e.g. 120 applications, 60 selected interviews, 15 selected master attendees)
- The MIPET Tuition Fee is 7'500.00 Euro, but a full coverage of tuition fee is available for best candidate and many scholarships & grants are available for good students
- In all past MIPET editions each student received at least a 6'000.00 Euro grant in advance from Companies and/or Governmental Institutions and have to pay only 1'500.00 Euro for being enrolled at selection procedure completion (no extra payment required)
- In previous MIPET Editions, the Students successfully achieving the Master Degree and hired by MIPET Sponsors received a full refund (100%) of Tuition Fees
- MIPET is establishing agreements with major Universities around the World for promoting this education initiative as well as the cooperation on Industrial Plant Engineering & Technologies

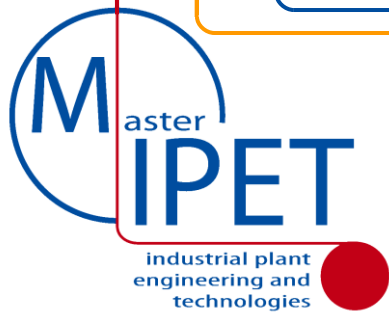
\* ROI Return of Investments



# GRANTS & PLACEMENT

- The job placement is very good both in terms of numbers and quality; placement statistics confirm that more than 80% of students from previous Editions were hired by leading industries and major companies operating in industrial sector after graduation.
- All MIPET Sponsor Companies are interested and committed to evaluate the best MIPET students for job positions and, in case of selection, the Sponsors will hire these people and recognize them the efforts for attending MIPET, at least, by refunding the full tuition fee including the 1st Payment 1'500.00 Euro
- Master Students and Companies have the opportunities to know each other during the Internship & Project Work improving professional Curriculum and placement opportunities
- MIPET organizes periodic group and individual meetings between Sponsor Companies and MIPET Students, as well as orientation meetings, in order to finalize internship and cooperation agreements





# GENERAL PROGRAM



The Master in Industrial Plants includes:

- Basic Modules for Industrial Plant Engineering and Construction, including Process Engineering, Plant Automation, Materials & Technologies, etc.
- Operative Modules on Critical Issues for Industrial Plants (e.g. Engineering Standards and Regulations, Project Management, Quality Assurance etc.)
- Thematic Modules on Innovative Solution for Specific Plant Sectors (e.g. Power, Iron and Steel, Water Treatment, Sustainability)
- Company Internships devoted to acquire on-field experience, including the development of the Project Work related to a Real Case
- Visits to Industrial Plants and Engineering, Research & Development Centers and Labs.
- Tests for certifying individual skills and capabilities acquired by the attendees on specific topics at the end of each single module.
- Professional Modules, integrated in the Master Program, but open for external attendees as stand alone courses. These modules include individual and team Projects Works to be carried out in competition/cooperation interacting with experts.





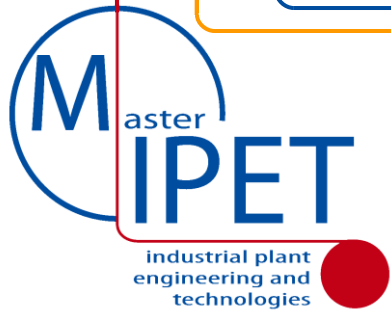
# OPERATIVE MODULES

Operative Modules are compact and specific courses (1-5 days), which are an integral part of the Master and at the same time are open and offered to external companies, technical employees or professionals interested in these subjects. MIPET Sponsors get 2 free seats in each Operative Module and are entitled to get discounts and opportunities for further registrations into Operative and Thematic Modules.

These modules are carried out jointly by the Industry and the Academy and are characterized by strong interaction between students and teachers through simulations and Role Play Games performed on specific case studies. Among the others the following modules are foreseen:

- **Engineering Standards and Regulations**
- **Construction**
- **Project Management**
- **Safety & Risks**
- **Innovative Technologies, Techniques and Methodologies for Industrial Plants**





# EDUCATIONAL PATH

## Educational Framework



**Basic Modules**  
80 hours

**Operative Modules**  
180 hours

**Thematic Modules**  
160 hours

**Internship & PW**  
480 hours

*420 hours in Classroom and Labs*

*480 hours as Internship and Project Work (PW)*

*120 hours in International Seminars, Language, Orientation & Other Courses*

**Int.Seminars 30 hours**

**Languages 70 hours**

**Orientation 20 hours**



The Education framework of MIPET is focusing on industrial plant engineering and technologies by adopting different methods such as lectures, case study, exercises, common experiences, RPG (Role Play Games), simulations, use of models and software tools, interactive blended education (i.e. clickers), industrial plant guided visits and R&D\* Lab experiences

\* R&D Research & Development



Prof. A.G.Bruzzone  
MIPET Director

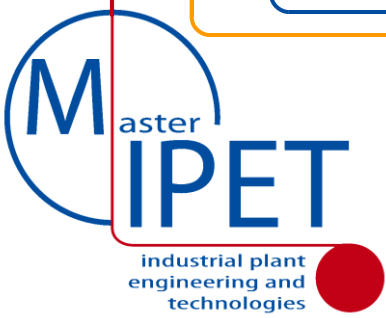
[www.itim.unige.it/mipet](http://www.itim.unige.it/mipet)

Copyright © 2014  
Genoa University

[mipet@simulationteam.com](mailto:mipet@simulationteam.com)







# MODULES



## Educational Module Topics



- Fundamental Concepts related to Industrial Plants Projects
- Fundamentals of Financial Analysis for Industrial Plants
- Processes Engineering and Components in Industrial Plants
- Design and Engineering for Industrial Plant Systems
- Material Technology, Mechanical Design and Industrial Plants
- Automation in Industrial Plants
- Software Systems for Supporting Industrial Plant Design & Evaluation



- Standards & Regulations
- Project Management
- Construction
- Safety & Risks
- R&D in Industrial Plants
- M&S in Industrial Plants
- Comm. & Team Building
- MIPET International Seminars ~30 hours



- Power Plants
- Iron & Steel Plants
- Plants for Environment
- Processes & Machines in Industrial Plants
- Desalination & Water Treatments
- Environment & Sustainability for Industrial Plant Engineering
- MIPET Other Modules ~90 hours English, Chinese, Italian, Orientation



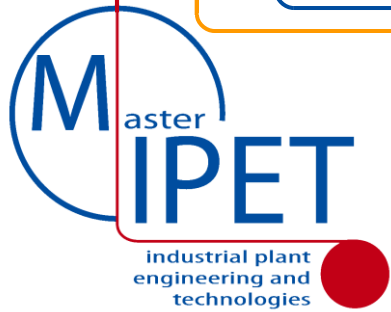
Prof. A.G. Bruzzone  
MIPET Director

[www.itim.unige.it/mipet](http://www.itim.unige.it/mipet)

Copyright © 2014  
Genoa University

[mipet@simulationteam.com](mailto:mipet@simulationteam.com)





# MASTER: FACULTY & LABS



The Master Teachers are an effective mix of Academic & Industrial Experts

- Genoa University Professors
- Italian Top-Quality University Faculty
- International Professors & Experts
- Top Experts and Executives from Plant Industry
- Professional Experts from Institutes and Organizations



All the MIPET Sponsor Companies have the possibility of being actively involved in Lecturing, driving Project Works, providing Case Studies, developing Class Exercises and offering Internships & Project Works.

MIPET includes experiences in up-to-date R&D Labs (e.g. Virtual Caves, Simulation, Combustion, Smart Grid) as well as visits to Industrial Plants tutored by Experts



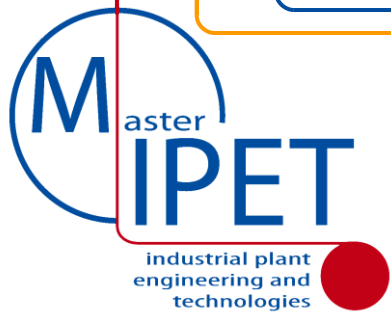
Prof. A.G. Bruzzone  
MIPET Director

[www.itim.unige.it/mipet](http://www.itim.unige.it/mipet)

Copyright © 2014  
Genoa University

[mipet@simulationteam.com](mailto:mipet@simulationteam.com)





# ORGANIZATION

This Master is coordinated by a Technical Scientific Committee composed by the following members:

- **Agostino Bruzzone** (Full Professor of Industrial Plants in DIME, MIPET Director)
- **Matteo Agresta** (Simulation Team - University of Genoa)
- **Giorgio Cannata** (Professor of Automation, DIST)
- **Micaela Caserza** (MAILAB - University of Genoa)
- **Marco Del Borghi** (Full Professor of Chemical Processes, DICHEP)
- **Carla Gambaro** (Professor of Technologies, DICHEP)
- **Pietro Giribone** (Full Professor Industrial Plants, DIME)
- **Aleramo Lucifredi** (Full Professor of Applied Mechanics, DIME)
- **Andrea Reverberi** (Professor of Chemical Processes, DICHEP)
- **Luca Tagliafico** (Full Professor of Thermo-Energy, DIME)
- **Angela Taramasso** (Professor of Civil Eng., DIST)
- **Flavio Tonelli** (Professor of Industrial Plants, DIME)
- **Alberto Tremori** (DIME - University of Genoa)
- **Maurizio Barabino** (ABB Italia)
- **Giovanni De Marchi** (Paul Wurth Italia)
- **Cesare Laviosa** (Danieli Centro Combustion)
- **Carlo Raggio** (TenoVA)
- **Enrico Gastaldo** (Prisma Impianti)
- **Alessandro Bongiovi** (ABB)
- **Pier Luigi Biancheri** (PMS)
- **Alessandro Donetti** (Danieli Centro Combustion)
- **Piergiorgio Fontana** (Consultant)
- **Giorgio Migliorini** (Fisia Italimpianti)
- **Simonluca Poggi** (Simulation Team)
- **Massimo Romairone** (Bombardier)
- **Stefano Sadowski** (Projenia)



The Master Support Services are provided by:  
–Simulation Team, MITIM, DIME, Polytechnic School

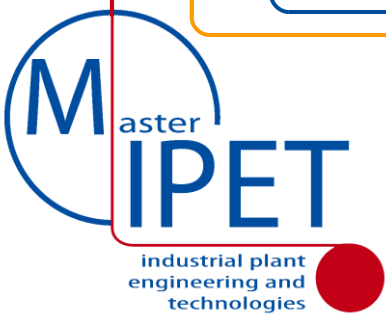


Prof. A.G.Bruzzone  
MIPET Director

[www.itim.unige.it/mipet](http://www.itim.unige.it/mipet)

Copyright © 2014  
Genoa University

[mipet@simulationteam.com](mailto:mipet@simulationteam.com)



# SPONSOR COMPANIES



## BENEFITS FOR SPONSORS

- Active role in selection processes of Master Candidates
- Opportunity for deep evaluation and selection of Master Attendees during Selection, Educational Modules, Internship and Project Work
- Opportunities to improve the skills of Engineers & Technicians already employed
- Free Seats and Discounted Rates for registering into the Operative Modules
- Sharing High Quality Education Costs within a Specific Qualified Community
- Cultural Interaction among the different Actors of this initiative: Industrial Companies, University and Local Institutions.
- Joint University-Industry stimulation of interest and research projects on subjects related to plant engineering.
- Development of a Fertile Background in Industrial Plant, Global Engineering and Construction devoted to enhance the competitiveness of the whole system.



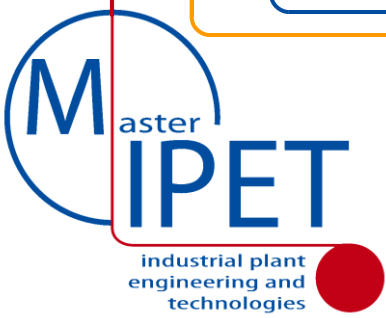
Prof. A.G.Bruzzone  
MIPET Director

[www.itim.unige.it/mipet](http://www.itim.unige.it/mipet)

Copyright © 2014  
Genoa University

[mipet@simulationteam.com](mailto:mipet@simulationteam.com)





# MIPET & INDUSTRIES



## HOW A COMPANY BECOMES SPONSOR OF MIPET

- Subscribing an Agreement that includes an annual fee and the commitment to provide resources (i.e. 15 hours of experts for specific contributions to educational modules to be developed under Technical Scientific Committee Coordination).
- Contributing with its requirements and preferences respect to the characteristics of Master Attendees to be selected and on the Topics to be addressed in the Program
- Registering its employees to the Master Program or to specific Operative Modules
- Offering Internships to Master Program Students
- Providing Expertise as well as Real Case Studies

Sponsors MIPET 5th Edition



**PAUL WURTH**

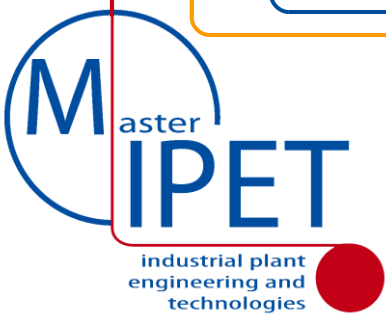


Prof. A.G. Bruzzone  
MIPET Director

[www.itim.unige.it/mipet](http://www.itim.unige.it/mipet)

Copyright © 2014  
Genoa University

[mipet@simulationteam.com](mailto:mipet@simulationteam.com)



# MIPET FEATURES



The ongoing cooperation among partners and sponsors aims at continuous improvement by guarantee MIPET top quality level:

- All Lectures and Material are in English
- Language Course for Attendees (English plus other optional Courses, i.e. Chinese)
- Agreements with Offices of Leading Companies for Cooperation and Enhancement of their top level engineers by involving them in MIPET Program
- Agreements with International Schools active in Plant Engineering and Technologies for Exchanging Trainers and Students
- Development of a Plant Engineering Reference Book for MIPET
- High Involvement of Foreign Students (e.g. India, Brazil, Iran)
- Special Benefits for Sponsors (i.e. Operative & Thematic Modules)



Examples of Other Cooperating Companies & Entities

Sponsors MIPET 5th Edition



Prof. A.G. Bruzzone  
MIPET Director

[www.itim.unige.it/mipet](http://www.itim.unige.it/mipet)

Copyright © 2014  
Genoa University

[mipet@simulationteam.com](mailto:mipet@simulationteam.com)



# Companies interested in Human Capital & Complex System Engineering







Leader in Energy and Automation



# MIPET: ABB Power System Division







# DANIELI CENTRO COMBUSTION



*Roberto Bertuzzi, HR  
Cesare Laviosa, Operations*





## Leading Player in Engineering and Construction



- Ironmaking
- Cokemaking
- Environmental Protection
- Energy Saving

**Technology and Innovation is our life insurance in a global market: portfolio of 224 patented inventions protected by 1584 active patents. 40 licensees. Recent orders in Brazil, Mexico, Germany, India, Japan, Korea, Russia, Taiwan.**

PW: 26 entities in 18 countries, totalling about 1600 people, mostly holding a university degree. PW Italia, employing 208 people based in Genoa (99 hired in the last 5 years), is one of the Main group company with long tradition.





**Prisma Impianti S.p.A.** è un'azienda leader nella fornitura di impianti "chiavi in mano" o EPC (Engineering, Procurement, Construction), in particolare nell'ambito dei **sistemi di Automazione per Processi Industriali**. Inoltre, grazie ad un profondo know-how sviluppato negli anni, Prisma Impianti ricopre un ruolo fondamentale nel **revamping** di impianti esistenti riguardo alla parte **meccanica, elettrostrumentale, automazione e controllo**.

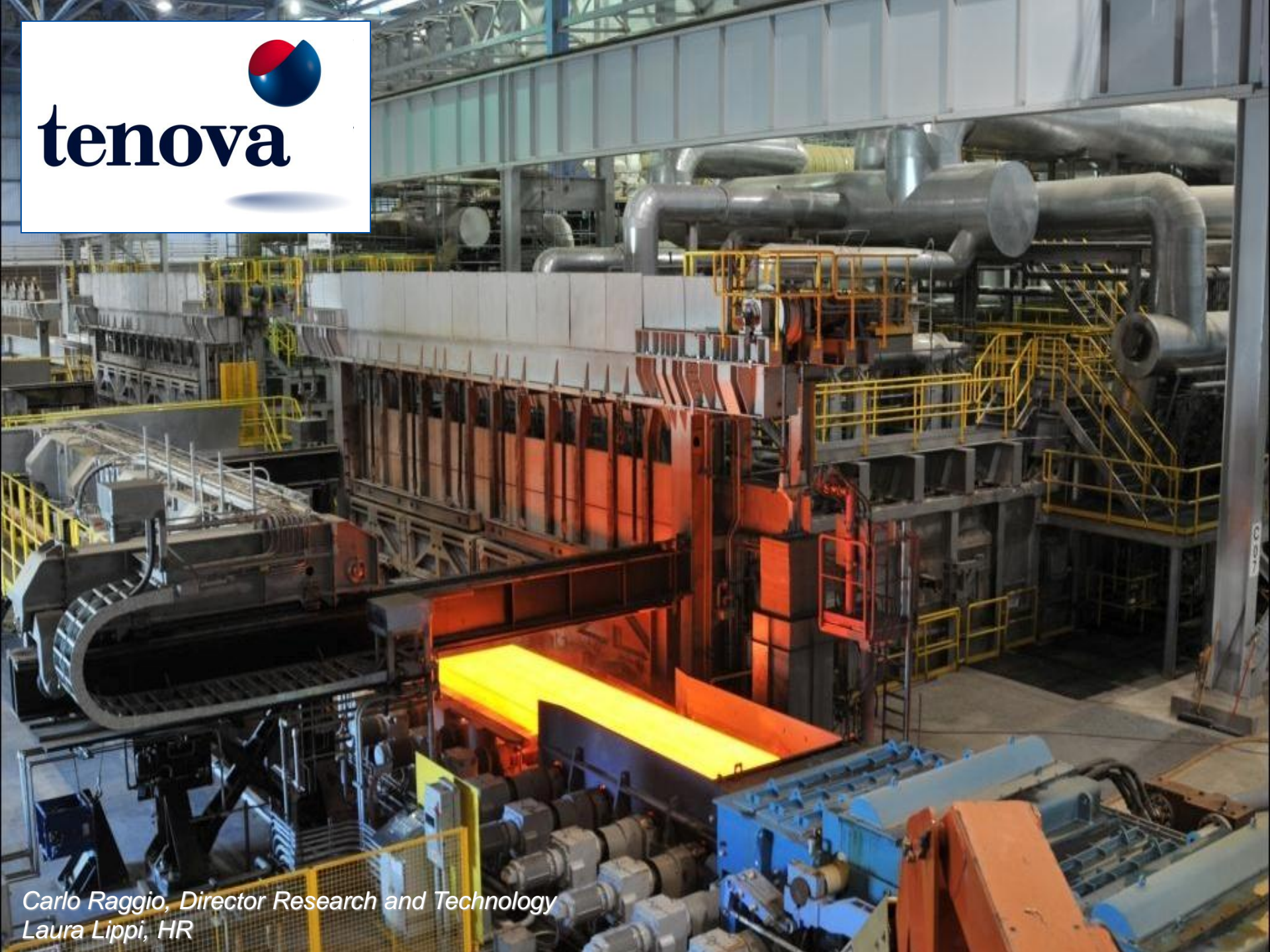
**PRISMA**<sup>®</sup>  
Impianti

Automation and Electrical Systems for a Hot-Dip Galvanizing Line





**tenova**

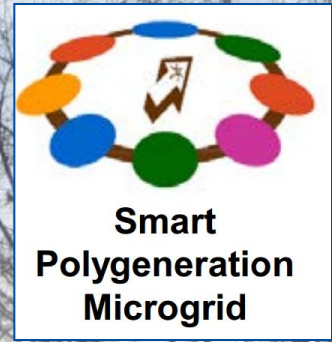
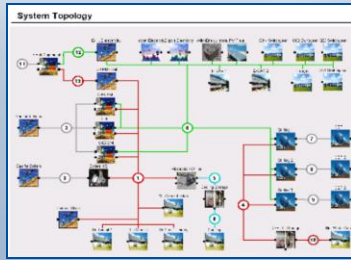


*Carlo Raggio, Director Research and Technology  
Laura Lippi, HR*

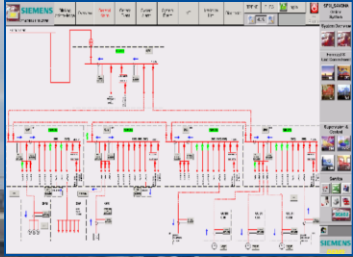
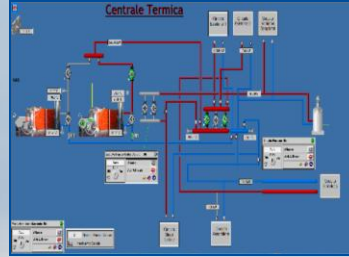








**Smart  
Polygeneration  
Microgrid**



**Proud Member of Simulation Team**

*Federico Delfino, Smart Energy Team Director, Rector Delegate for Savona Campus Genoa University*





# Jobs & Careers in Foster Wheeler, a Global Engineering and Construction Group

Genova, March 27<sup>th</sup> 2014



[www.fwc.com](http://www.fwc.com)

*Anna Maria Beltrami, Manager of Resourcing*

# Fleet Management

La più qualificata Ingegneria di Manutenzione  
a garanzia della massima efficienza  
di servizio delle Flotte



ANNULLATO PUNTUALE	PARTENZA	DESTINAZIONE
● ●	08:52	ROMA
● ●	09:12	IL CAIRO
● ●	09:15	ISTANBUL
● ●	09:17	MILANO
● ●	09:38	ATENE
● ●	10:02	ZAGABRIA
● ●	10:07	NAPOLI
● ●	10:35	BELGRADO



**BOMBARDIER**  
the evolution of mobility





Via Corsica 12 - 16128 Genova - Italy  
ph. +39 010 53851 - fax +39 010 5351000  
[info@rinagroup.org](mailto:info@rinagroup.org) - [www.rinagroup.org](http://www.rinagroup.org)

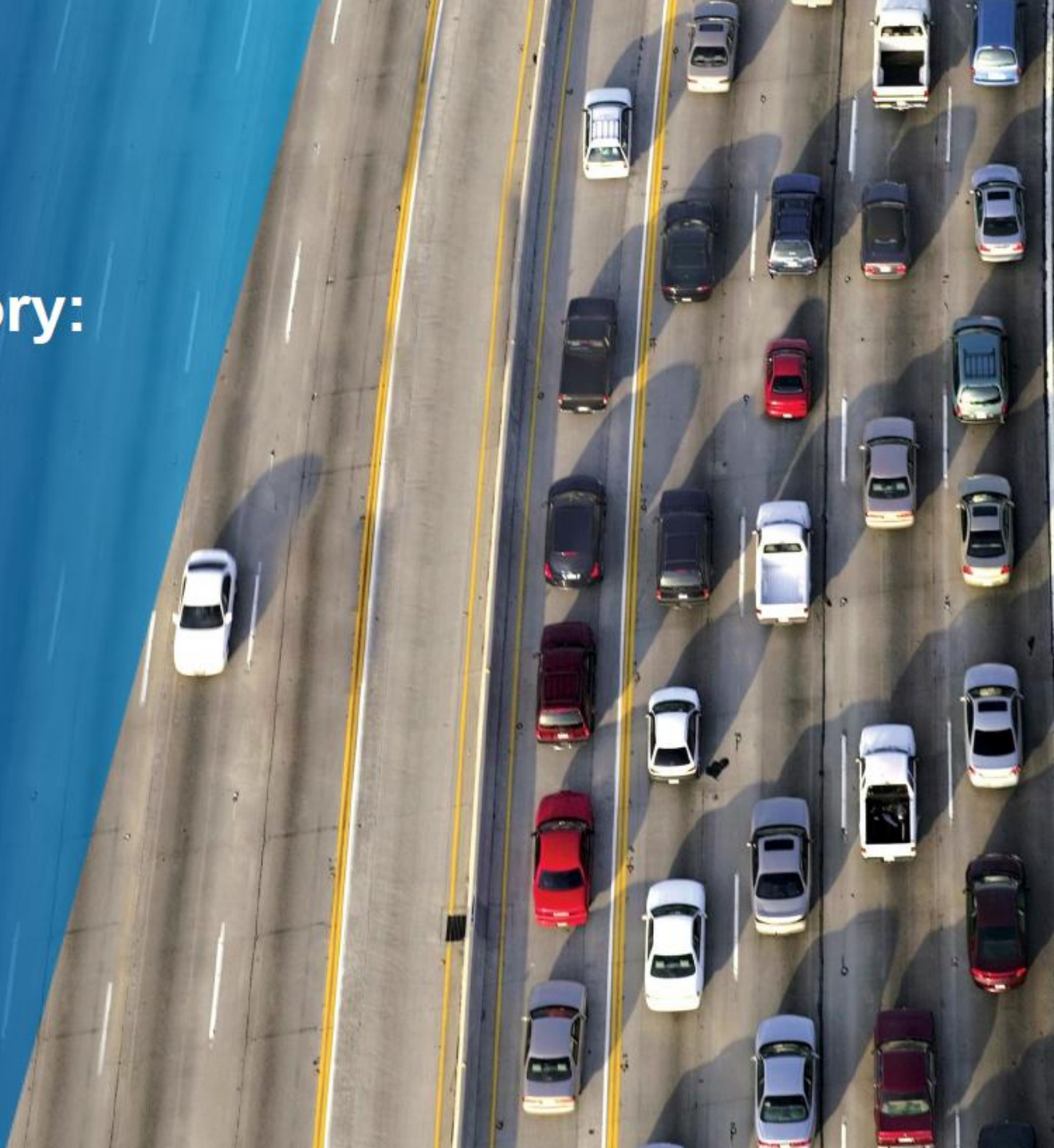




*cutting through complexity™*

# KPMG Advisory: per vincere la sfida della complessità

*Sara Blasi  
Recruiting & Training Specialist*







# Management of Advanced Solutions and Technologies



**Proud Member of Simulation Team**

**Leader in Modeling & Simulation: The only Italian Company Active as Contractor for M&S with European Defense Agency**



# Procter & Gamble



**A NEW CHALLENGE EVERY DAY.™**  
Daily. Globally. Personally. Professionally.

**P&G**  
[www.PGcareers.com](http://www.PGcareers.com)



# TOSHIBA

Transmission & Distribution Europe



*Gianluca Caffarati, Manager*

Masdar  
INSTITUTE



مصدر  
مصدر







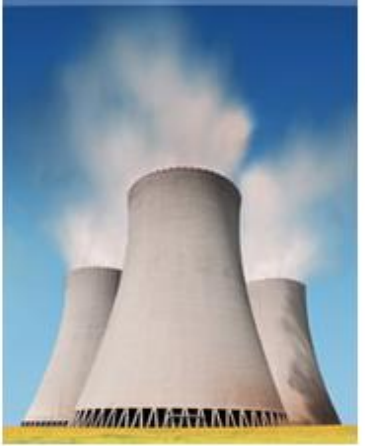
Defense



Aerospace



Energy



Transport



Other Industries





International Labour Office



*Valentina Barcucci, Programme Officer, International Labour Organisation*



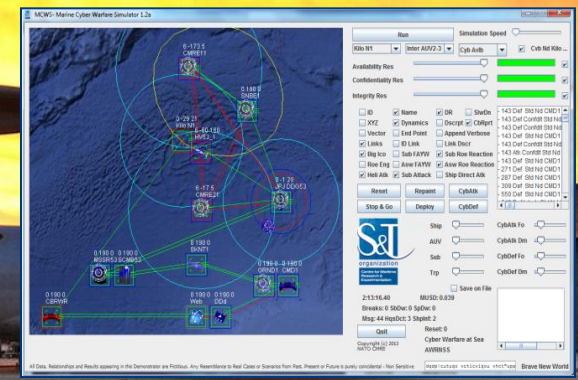


“ BK = brain and knowledge  
*è fornire valore aggiunto + esperienza* ”



Francesco Lupi, CEO & Founder, BK

# NATO STO Center for Maritime Research and Experimentation



Top Level Engineers and Scientists involved in leading R&D on Multinational Programs addressing major Challenges:  
[www.cmre.nato.int](http://www.cmre.nato.int)



FI-0304-06  
Flow Indicator on corrosion inhibitor injection line  
value: 0.10 l/h

RB

1 Oil inlet line

2 Oil outlet line

3 Water outlet line

3.1 Locate Level control valve on water outlet line

4 Gas outlet line

CHECK OR LOCATE



Emergency simulation



Realistic 3D environment  
Visual FX  
Spatial sound rendering  
Simplified navigation



RT



**BF Partners**

**A MANAGEMENT CONSULTING COMPANY**



[www.bfpartners.it](http://www.bfpartners.it)

Alessandro Bosio, Socio Fondatore, BF Partners



# Rethinking Asset Management

helping Energy & Facility Management organizations to improve their  
Maintenance, Technical and Energy performances



Efficientamento energetico nella grande distribuzione



Monitoraggio degli elettromedicali in mobilità



Aumentare la disponibilità del parco mezzi

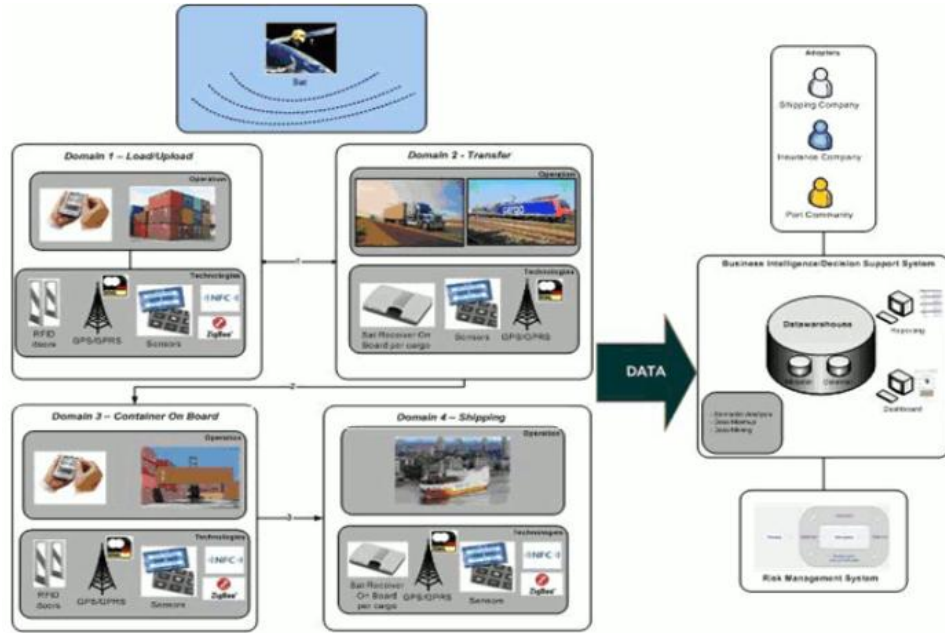


Gestire i lavori di Dry Dock





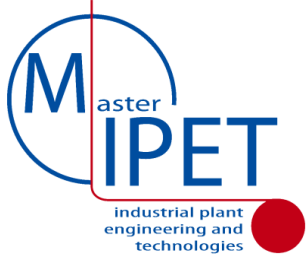




***www.widepilot.it***



# Ordine degli Ingegneri della Provincia di Genova





**Stai cercando personale?**  
Se desideri pubblicare un annuncio o cercare CV, vai a [selezione.monster.it](http://selezione.monster.it).



Non visualizzare più questo messaggio

# monster®

[Consigli](#) [Aree professionali](#)

[Iscriviti](#) o [Accedi](#) [Aiuto e Sicurezza](#)

[Area Azie](#)

## Monster Talent

Qui potrai trovare contenuti dedicati a laureandi e neolaureati.

Metti il tuo talento a disposizione delle migliori Aziende.



### Offerte di lavoro per Neolaureati



- Laurea in economia
- Laurea in ingegneria
- Laurea in marketing

Inserisci parola chiave

**RICERCA**



#### Trova i migliori talenti

Pubblica annunci di lavoro e cerca CV nel più grande Database in Italia e nel mondo. Scopri le soluzioni Monster.



#### Inserisci il tuo CV

Inserisci il tuo CV e rendilo ricercabile. Consulta gli annunci di lavoro su Monster.it e scopri quelli più in linea con il tuo profilo.



#### Profili aziendali

Scopri i valori, la mission e le offerte di lavoro delle Aziende su Monster. Trova nuove opportunità di lavoro.





Maurizio Cialdini, EURES



# Questions & Free Discussion...



**Prof. Agostino G. Bruzzone**  
*DIME, University of Genoa*  
via Opera Pia 15, 16145 Genova  
Email [agostino@itm.unige.it](mailto:agostino@itm.unige.it)  
URL [www.itm.unige.it](http://www.itm.unige.it)

**Dott.ssa Monica Sbrana**  
*PERFORM, University of Genoa*  
Piazzetta Sarmiento, 16124 Genova, Italy  
Email [sbrana@perform.unige.it](mailto:sbrana@perform.unige.it)  
URL [www.perform.unige.it](http://www.perform.unige.it)

**Dott.ssa Iaria Burlando**  
*PERFORM, University of Genoa*  
Piazzetta dell'Anatomia, 2, 16124 Genova, Italy  
Tel. +39 010 238 3485 - Fax +39 010 238466  
Email [burlando@perform.unige.it](mailto:burlando@perform.unige.it)  
URL [www.unige.it/ingegneri/unige.it](http://www.unige.it/ingegneri/unige.it)

**ABB**  
ALFA ROMEO  
BAE WORTH  
CARRERA  
Genova  
APRIL TECHNOLOGIES  
BOMBARDIER  
MST





**Companies Involved in Current edition:**

**ABB**  
**DANIELI**  
 CENTRO COMBUSTION  
**PAUL WURTH tenova**  
**PRISMA Impianti** **TOSHIBA**  
 Transmission & Distribution Europe  
**FOSTER WHEELER**  
**D'APPOLONIA**  
**AST**  
**RINA GROUP**  
 making the best together...  
**KAIROS3D**  
 Interactive 3D solutions  
**P&G**  
**S&T organization**  
 Center for Maritime Research & Experimentation  
**Masdar INSTITUTE**  
**مسجد**  
**KPMG** **ilb** **BF Partners**  
 software & consulting  
**BK** **SILKAN**  
 brain knowledge over time



# ... CAMPUS INTERVIEWS ...





**Companies Involved in Current edition:**



















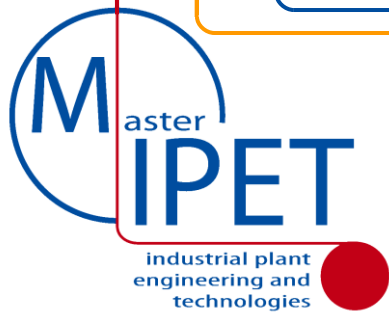









... and Interviewing



# References

[www.itim.unige.it/mipet](http://www.itim.unige.it/mipet)  
[mipet@itim.unige.it](mailto:mipet@itim.unige.it)



**Prof. Agostino G. Bruzzone**  
**DIME, University of Genoa**  
via Opera Pia 15, 16145 Genova  
Email [agostino@itim.unige.it](mailto:agostino@itim.unige.it)  
URL [www.itim.unige.it](http://www.itim.unige.it)



**Sponsors**



**Dott.ssa Marina Massei**  
**DIME, University of Genoa**  
Via Cadorna, 17100 Savona, Italy  
Email [massei@itim.unige.it](mailto:massei@itim.unige.it)  
URL [www.itim.unige.it/mipet](http://www.itim.unige.it/mipet)



**Ing. Matteo Agresta, Point of Contact**  
**Simulation Team, DIME**  
Via Opera Pia 15, 16145 Genova, Italy  
Tel +39 346 8289 012 - Fax +39 019 2302 289,  
Email [matteo.agresta@simulationteam.com](mailto:matteo.agresta@simulationteam.com)  
URL [www.itim.unige.it/mipet](http://www.itim.unige.it/mipet)



Prof. A.G. Bruzzone  
MIPET Director

[www.itim.unige.it/mipet](http://www.itim.unige.it/mipet)

Copyright © 2014  
Genoa University

[mipet@simulationteam.com](mailto:mipet@simulationteam.com)

